

Hasman Aeroseal

Luxury Office – New Bond Street, Mayfair, London

Medium Class B ductwork systems

A luxury office fit out on New Bond Street in London, which included a medium class B ductwork system. All four ductwork system leakage rates exceeded the allowable rate of 3% outlined in DW143. The ductwork systems were due to be insulated and commissioned, ductwork leakage was stalling the project's progress. Hasman sealed all 4 ductwork systems and delivered pressure testing in a single day.

Project Details:

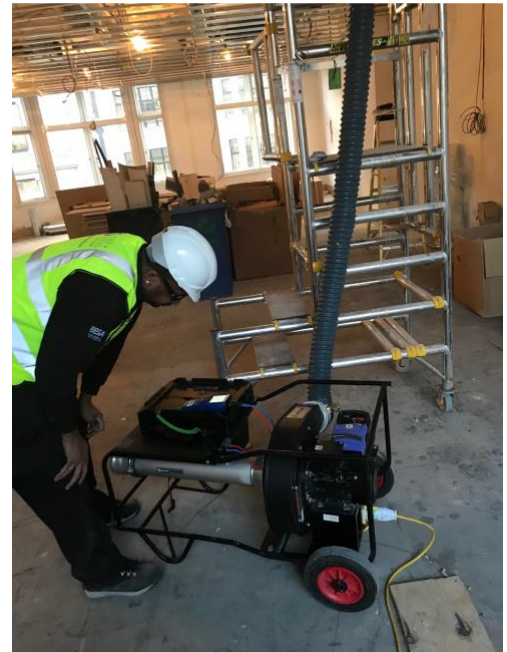
Building: Luxury office in prestigious London W1S postcode

Date: 14/02/18

Objective: Reduce ductwork leakage in accordance with DW143 for Class B



Aeroseal Injection Equipment



Pressure testing with PANDA 341

Aeroseal injection details (1 of 4):

Duct surface area: 20.0m²
 Pre-seal leakage: 79.97l/s (20.5%)
 Post-seal leakage: 3.9l/s (1.0%)
 Leakage reduction: 95.13%
 Equivalent class: Class C

Aeroseal injection details (2 of 4):

Duct surface area:	17.93m ²
Pre-seal leakage:	85.62l/s (24.7%)
Post-seal leakage:	4.0l/s (1.2%)
Leakage reduction:	95.33%
Equivalent class:	Class C

Aeroseal injection details (3 of 4):

Duct surface area:	7.43m ²
Pre-seal leakage:	17.86l/s (12.4%)
Post-seal leakage:	1.78l/s (1.2%)
Leakage reduction:	91.05%
Equivalent class:	Class C

Aeroseal injection details (4 of 4):

Duct surface area:	10.78m ²
Pre-seal leakage:	19.40l/s (9.3%)
Post-seal leakage:	2.77l/s (1.3%)
Leakage reduction:	85.73%
Equivalent class:	Class C

After Aeroseal the buildings system leakage was reduced by an average of 91.5%. All systems passed pressure testing with leakage rates equivalent of class C, above the building's specification of class B.

Hasman helped ensure that no further delays were experienced on this project, providing a fast and cost effective solution to our customer.